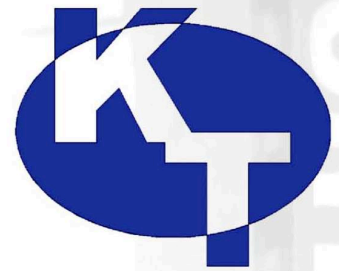


K Tooling



Partnering with Precision

Where lead-time, quality, and valued services count !



- **CNC Machining**
- **CNC Fabrication**
- **Welding Services**
- **Laser Cutting**
- **Bending/Forming**
- **Design & Engineering**
- **Turnkey Manufacturing & Packaging**

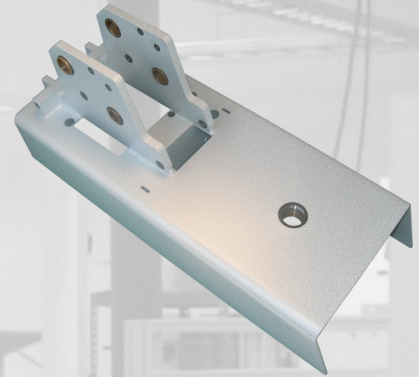
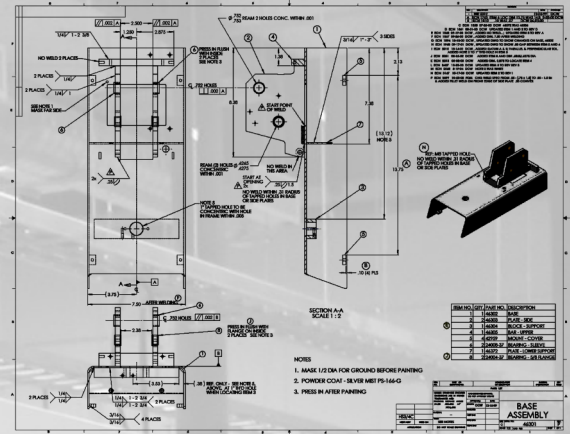
**396 E. Front St, Hancock, NY 13783 Phone 607-637-3781 Fax 855-563-1101
12 Winkler Rd., Sidney, NY 13838 Email: info@ktooling.com www.ktooling.com**

CNC FABRICATING

LASER CUTTING



- *Trumpf TruLaser 1030*
- *Fiber cutting technology*
- *Faster than co2*
- *Cuts wide variety of metals*



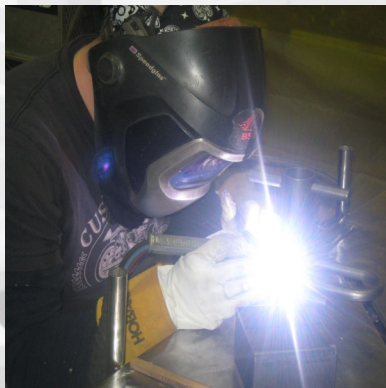
SHEET METAL FABRICATION

- *Trumpf 5170 CNC pressbreak*
- *1 axis shift for edge hemming*
- *190 Ton, 10ft bed*
- *Off line programming*



Below: This large weldment is a blood sample processor machine base. The turnkey project consisted of over 70 machined and fabricated components and was built and delivered in 8 weeks.

WELDING SERVICES



- *GTAW, GMAW, SMAW*
- *Silver brazing, flux core*
- *Robotic welding, fixturing & engineering*
- *Cell design & turnkey*



QUALITY: In addition to being AS9100 and ISO:9000 compliant, our emphasis is "QC at the source." Our *first piece, first article, in process, and final inspection* procedures assure quality throughout the manufacturing process. We utilize CMM technology throughout our inspection process.

LEAD-TIME: Our software based shop floor management system helps keep our scheduling on time. We always have a machine tool ready for the next job, which enables us to start a project within days after receiving an order, allowing us to be responsive to our customers growing demands.

Facilities List

Lathes

- Mazak Quick-Turn 250 CNC Turning Center, 2" thru bar capacity w/ LNS bar feeder
- Mori Seiki SL204 CNC Turning Center, 2-1/2" thru bar capacity
- Mori Seiki NL2500SY/700 CNC Turn/Mill, 3" thru bar capacity 10" chuck, sub spindle, milling C&Y axis, LNS bar feeder
- Harding Super-Precision Turret Lathe
- LeBlond Regal Tool Room Lathe, 40" bed length

Mills

- Mori Seiki NH4000DCG Horizontal Machining Center - 22" x 22" x 26" XYZ full 4th axis
- Mori Seiki NV5000B/40 Vertical Machining Center - 40" x 20" x 20" XYZ Travel
- Mori Seiki Duracenter 5 Vertical Machining Center - 30" x 20" x 20" XYZ, 5 axis capable
- Okuma E4020 Vertical Machining Center - 40" x 20" x 20" XYZ Travel
- Fanuc RoboDrill Mate Vertical Machining Center - 16" x 12" x 13" XYZ Travel
- Bridgeport "J" Type Knee Mill - 9" x 42" table

Fabrication

- Trumpf 1030 Fiber 5' x 10' CNC laser cutting machine w/ pallet changer
- Trumpf 5170 press break, 190 ton 10ft. bed, I axis shift for hemming

Inspection

- ZEISS Coordinate Measuring Machine (CMM) - 40" x 64" x 20" Travel
- Mico Vu Model H-14 Optical Comparator w/ Q16 computer DRO, 10x, 20x, 50 lenses
- Fowler/Trimos 600+ Digital Height Gauge
- Gauging for all OD/ID threads and hole sizes based on engineering specs

Other

- Behringer 330A Horizontal Band Saw - 12" x 12" bar capacity, w/ automatic shuttle
- Roto-Finish Gemini 700 Vibratory Finisher - 7 cubic ft. capacity
- E-Matic Super CE-CN Programmable Universal Bending, Folding, & Forming Machine
- Lincoln 275 Precision, 275 Squarewave TIG Welders
- Millermatic 185 & 252 MIG Welders
- Solidworks 2016 & Esprit CAM 2016

www.ktooling.com

396 E. Front Street, Hancock, NY 13783

12 Winkler Road, Sidney, NY 13838

Phone: 607-637-3781 • 855-563-1101 • Fax: 855-563-1101 • Email: info@ktooling.com